

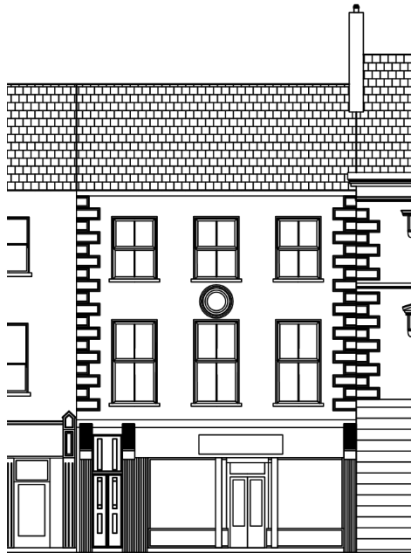
DENNY STREET, TRALEE BUILDING RECORD SHEETS





Research reported in this publication was funded by The Heritage Council.

The content of this publication is solely the responsibility of the authors and does not necessarily represent the official views of The Heritage Council.



NO. 2 DENNY STREET

INFORMATION

RPS/ NIAH 143/21007045

General Description Terraced three-bay three storey former house, built c. 1815, with two-storey extension to rear. Now in use as shop and offices.

Roof Pitched artificial slate roof

Parapet None

Chimneys Rendered chimneystack, polygonal clayware pots.

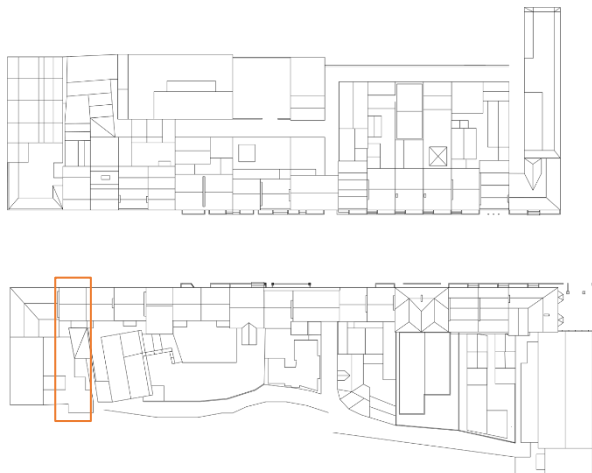
Rainwater Goods Cast-iron rainwater goods.

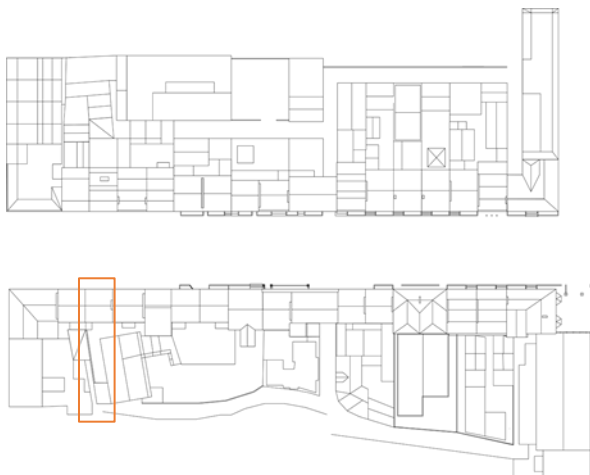
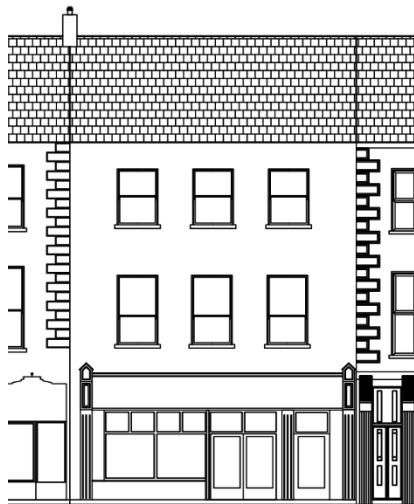
Ironwork None

External Plasterwork/Brick/Stucco Nap rendered walls with moulded quoins. Moulded circular panel between second and third storeys with painted metal fixture.

Windows uPVC top hung outward opening windows with painted stone sills to upper floors. Timber fixed window to ground floor

Front Door Panelled timber door and glazed door surrounding by timber pilaster and entablature shopfront.





NO. 3 DENNY STREET

INFORMATION

RPS/ NIAH 142/21007043

General Description Terraced three-bay three storey former house, built c. 1820's, now in use as restaurant and offices on upper levels. Building substantially rebuilt internally following a fire mid. 20th century.

Roof Pitched fibre cement slate roof

Parapet none

Chimneys Rendered chimneystack, polygonal clayware pots.

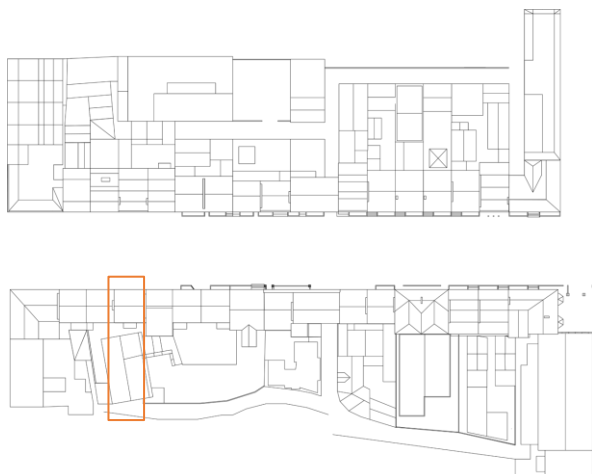
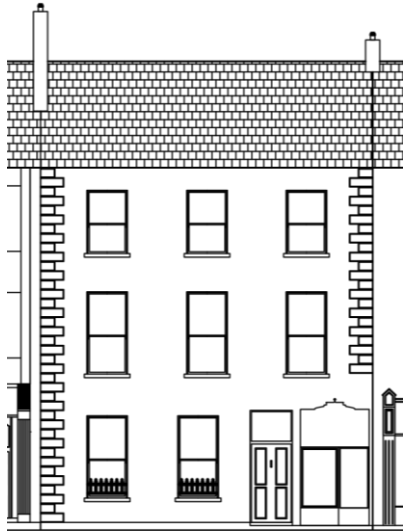
Rainwater Goods Cast-iron gutter

Ironwork none

External Plasterwork/Brick/Stucco smooth painted nap rendered walls with render quoins.

Windows Timber sliding sash windows with stone sills.

Front Door Timber panelled door with glazed window and top light above. Timber fixed window to shopfront.



NO. 4 DENNY STREET

INFORMATION

RPS/ NIAH 141/21007043

General Description Terraced three-bay three storey former house, built c. 1820's, now in use as offices, with art gallery in part of ground floor.

Roof Pitched natural slate roof

Parapet

Chimneys Rendered chimneystack, polygonal clayware pots.

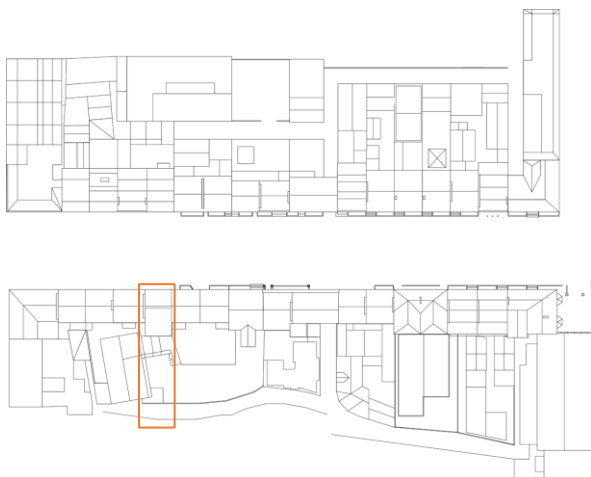
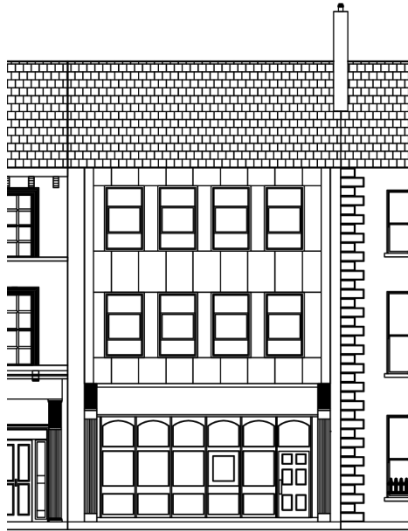
Rainwater Goods Cast-iron gutter

Ironwork None

External Plasterwork/Brick/Stucco Lined and ruled painted nap rendered walls with render quoins.

Windows Timber sliding sash windows with stone sills.

Front Door Timber panelled door with topflight above. Timber fixed window to shopfront having glazed timber door.



NO. 5 DENNY STREET

INFORMATION

RPS/ NIAH 140/21007040

General Description Terraced four-bay three-storey office, built c.1964, with shopfront to ground floor. Currently in education use throughout, and linked internally through openings in party walls with nos. 6, 7 & 8.

Roof Pitched natural slate roof.

Parapet none

Chimneys Rendered chimneystack and polygonal clayware pots

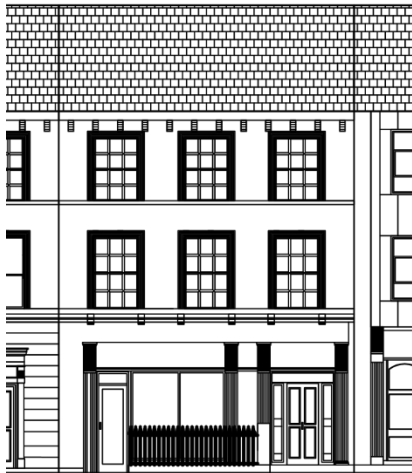
Rainwater Goods

Ironwork none

External Plasterwork/Brick/Stucco. Cement panel facing to upper storeys with pilasters clad in mosaic tiles.

Windows Aluminium horizontal pivot windows with raised cement surroundings. Timber fixed windows with glazed door

Front Door Timber shopfront with glazed door and panelled door having top lights surrounded by pilaster and entablature shopfront to ground floor.



NO. 6 DENNY STREET

INFORMATION

RPS/ NIAH 139/21007040

General Description Terraced three-bay three-storey former house, built c.1820's, with single-storey extension to rear. Currently in education use, in conjunction with nos. 5, 7 & 8, all of which are linked internally through openings in their party walls.

Roof Pitched natural slate roof.

Parapet None

Chimneys None

Rainwater Goods Cast-iron rainwater goods decorated with chevron pattern, and having carved cornice and modules to eaves courses

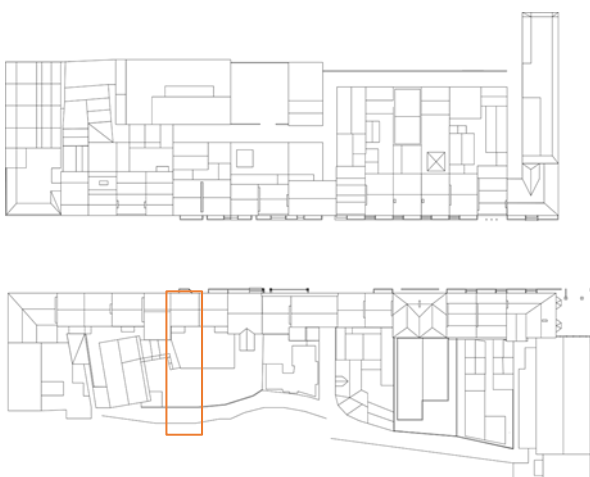
Ironwork Wrought-iron railings on painted rendered plinth.

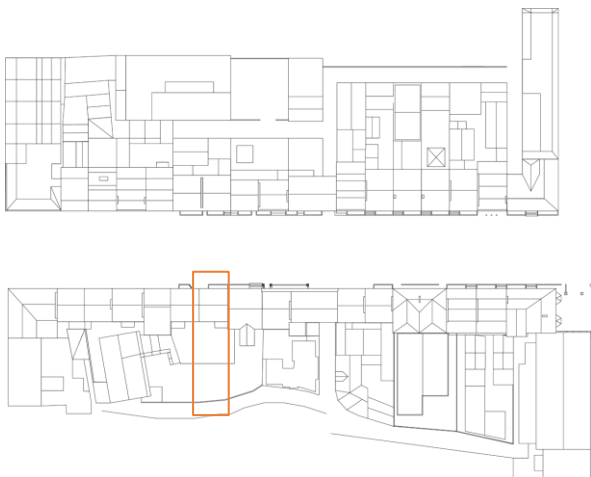
External Plasterwork/Brick/Stucco. Nap rendered walls with string courses at sill levels

Windows Aluminium top hung outwards opening window to upper floors. Recent timber fixed windows to ground floor.

Front Door Timber panelled door with top light and margin lines, having timber pilaster and entablature shopfront.

Steps Limestone steps to front door.





NO. 7 DENNY STREET

INFORMATION

RPS/ NIAH 138/21007040

General Description Terraced three-bay three-storey former house, built c.1820's, with single-storey extension to rear. Currently in education use, in conjunction with nos. 5, 7 & 8, all of which are linked internally through openings in their party walls.

Roof Pitched natural slate roof.

Parapet none

Chimneys none

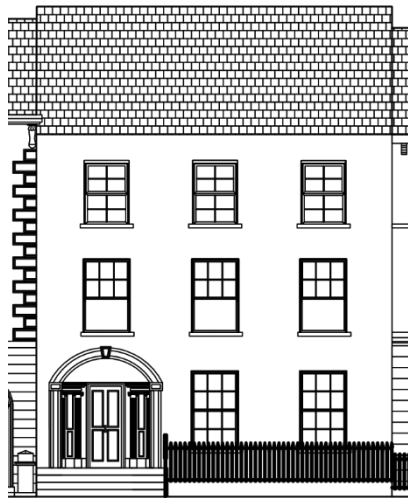
Rainwater Goods Cast-iron rainwater goods decorated with chevron pattern.

Ironwork Cast-iron railings on stone plinth.

External Plasterwork/Brick/Stucco Ashlar limestone facing to ground floor walls. Nap rendered lined and ruled walls above string courses at sill levels on upper floors.

Windows Timber top hung outwards opening window to upper floors.

Front Door Timber panelled door with top light having pilaster and entablature surround. Moulded raised decorative surround the openings.



NO. 8 DENNY STREET

INFORMATION

RPS/ NIAH 137/ 21007039

General Description Terraced three-bay three-storey over basement former house, built c. 1820's, three-storey pitched roofed extension to rear and two-storey flat roofed extension to rear. Currently in education use, in conjunction with nos. 5, 7 & 8, all of which are linked internally through openings in their party walls.

Roof Pitched artificial slate roof

Parapet None

Chimneys Former chimney (south wall) now removed

Rainwater Goods Cast-iron rainwater goods.

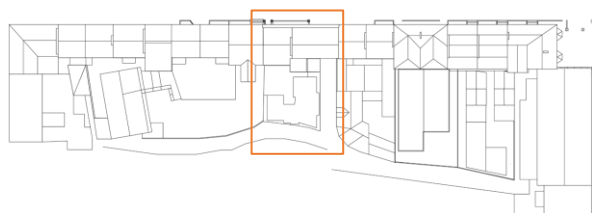
Ironwork Cast-iron railings on rendered plinth

External Plasterwork/Brick/Stucco Nap rendered lined-and-ruled walls.

Windows Timber sliding sash windows to ground floor and first floors with limestone sills. Timber top hung outward opening windows to top floor with limestone sills.

Front Door Timber panelled door with carved stone lintel, surrounded by engaged ionic columns and margin lights. Having radial fanlight with moulded archivolt above.

Steps Stone steps up to front down and down to basement.



NO. 9/10 DENNY STREET

INFORMATION

RPS/ NIAH 136/21007038

General Description Terraced three-bay three-storey over basement former houses, built 1820's, with single storey extension to rear, c 1970. In use as offices, with archway leading to mews laneway.

Roof Pitched natural slate roof

Parapet Limestone blocking course over projecting cornice with scrolls.

Chimneys Rendered chimneystacks, polygonal clayware pots.

Rainwater Goods Cast-iron rainwater goods

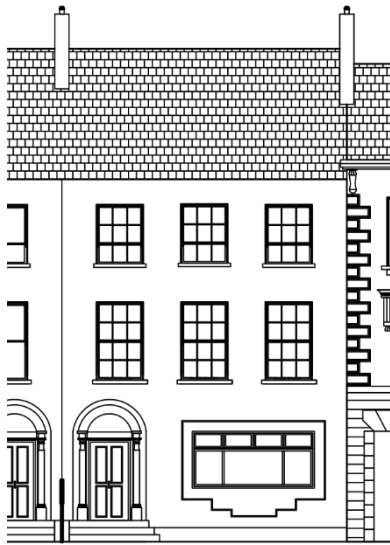
Ironwork Cast iron railings on limestone plinth with limestone piers.

External Plasterwork/Brick/Stucco Channelled rendered walls to ground floor. Lined-and-ruled painted nap rendered walls with quoins to upper floors, string course at sill level to first floor, and having moulded dentilled string course below cornice.

Windows Timber sliding sash windows surrounded by decorative raised render mouldings, painted limestone sills to ground and third floor floors.

Front Door Timber panelled doors with fanlight surrounded by rope moulded archivolt with carved head keystone. Alternating keystones to side opening.

Steps Limestone step to front door



NO. 11 DENNY STREET

INFORMATION

RPS/ NIAH 135/ 21007036

General Description Terraced three-bay three-storey former house, built 1830, with two-storey pitched roof extension and three-storey split-level return to rear. Now a restaurant on ground level and surgery on first floor.

Roof Pitched artificial slate roof.

Parapet none

Chimneys Nap rendered chimneystack

Rainwater Goods Cast-iron rainwater goods.

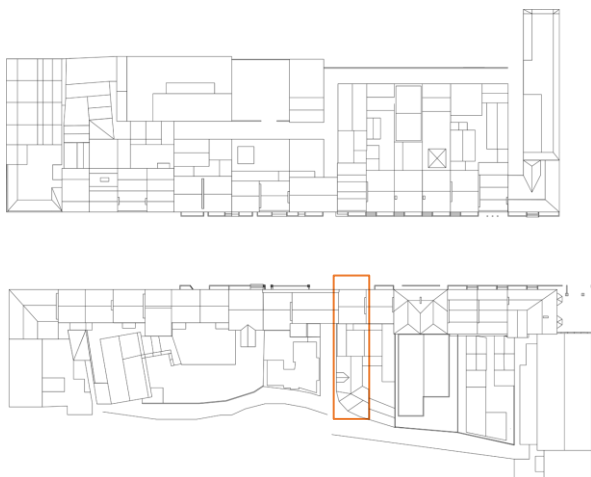
Ironwork original railings lost

External Plasterwork/Brick/Stucco Roughcast rendered walls to ground floor with raised render plinth. Nap rendered walls to upper floors.

Windows Inset marble surround to later window c.1950. Timber sliding sash windows to upper floors. Timber top hung outward opening windows to ground floor.

Front Door Double leaf timber panelled door with moulded lintel, surrounded by engaging ionic columns with fanlight and moulded archivolt above.

Steps Stone steps up to front door.



NO. 12 DENNY STREET

INFORMATION

RPS/ NIAH 134/21007035

General Description Terraced three-bay three storey over basement former house, built c. 1820's, with stair protection and two-storey return to rear. Now in use as offices.

Roof Pitched natural slate roof

Parapet none

Chimneys Rendered chimneystack

Rainwater Goods Cast-iron gutter

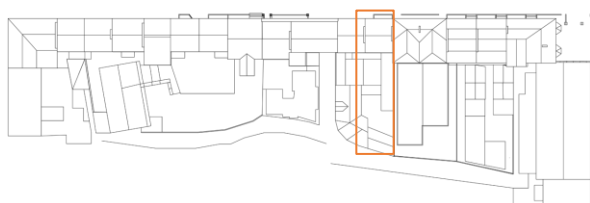
Ironwork original cast iron railings extant

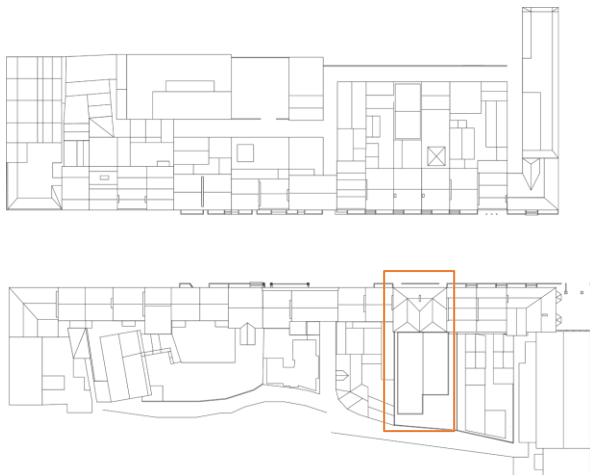
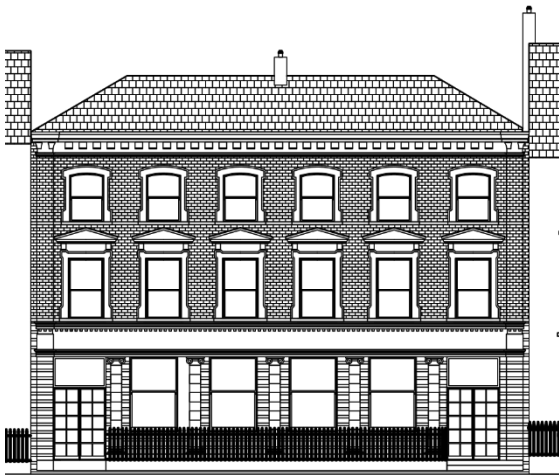
External Plasterwork/Brick/Stucco Lined and ruled painted nap rendered walls

Windows Timber one over one sliding sash windows with painted stone sills.

Front Door Timber panelled door with radial fanlight above, now covered with galvanised sheet to basement level.

Steps Stone steps up to front. Concrete steps down to basement.





NO. 13/14 DENNY STREET

INFORMATION

RPS/ NIAH 133/ 21007034

General Description Attached six-bay three storey over basement former bank, built 1928, with single storey extension to rear c, 1980.

Roof Pitched hipped slated roof. Flat metallised felt roof to extension.

Parapet Limestone parapet with modules.

Chimneys Brick chimneystack having moulded limestone cornice

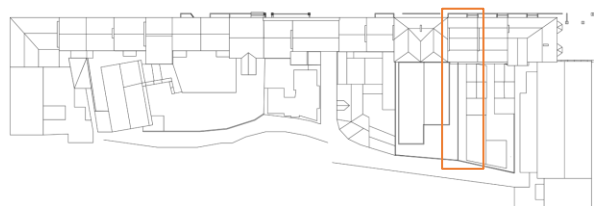
Ironwork Cast-iron railings on limestone plinth.

External Plasterwork/Brick/Stucco Channelled limestone ashlar walls with engaged ionic columns having entablature above ground floor. Red brick walls with limestone string course at sill levels to upper levels and moulded limestone surrounds, pedimented to second floor.

Windows Timber one-over-one sliding sash windows with limestone sills moulded limestone surrounds, pedimented to second floor.

Front Door Timber panelled double leaf doors with top lights to either end of ground floor.

Steps Limestone steps to front door



NO. 15 DENNY STREET

INFORMATION

RPS/ NIAH 132/21007033

General Description Terraced three-bay three-storey over basement house, built c. 1820's, with three storey split-level return and various extensions to rear. Now in use as a guest house.

Roof Pitched double span purple slate roof

Parapet None

Chimneys Rendered chimneystack, concrete barge to party wall

Rainwater Goods uPVC rainwater goods.

Ironwork Wrought iron railings on limestone plinth.

External Plasterwork/Brick/Stucco Nap rendered walls.

Windows Aluminium top hung outward opening windows with limestone sills.

Front Door Timber panelled door with carved lintel surrounded by engaged ionic columns having radial fanlight above with carved archivolt. Timber matchboard doors to basement.

Steps Limestone steps up to front door. Slate flag steps down to basement.

NO. 16 DENNY STREET

INFORMATION

RPS/ NIAH 131/ 21007032

General Description Terraced three-bay three storey over basement house, built c. 1820's, with two storey split level return and two-storey extensions to rear c. 1972. Rubble stone single pitched artificial slate roof. Art gallery in basement and former surgery on ground floor.

Roof Pitched double span purple slate roof

Chimneys Rendered chimneystack, polygonal clayware pots

Rainwater Goods Cast-iron rainwater goods.

Ironwork Wrought iron railings on limestone plinth.

External Plasterwork/Brick/Stucco Nap rendered walls with projecting metal sign

Windows Timber one-over-one sliding sash windows with limestone sills. Top hung outward opening window to basement.

Front Door Timber panelled door with painted lintel surrounded by engaged ionic columns having fanlight above with moulded archivolt. Timber flush door to basement.

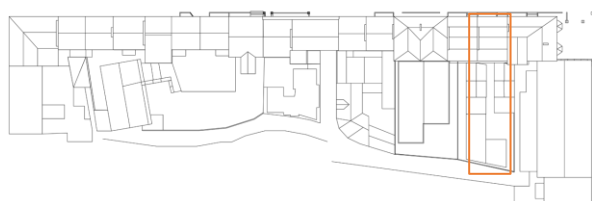
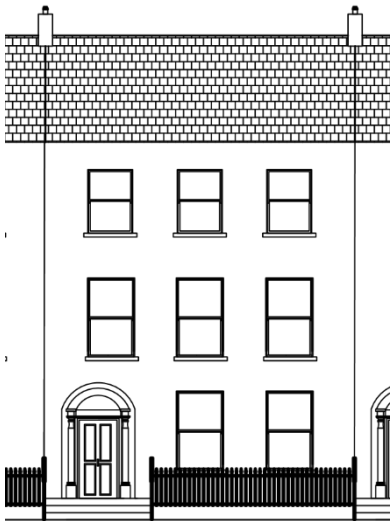
Steps Stone steps up to front. Concrete steps to basement.

Water Ingress/Damp Historic damp addressed

Timber Decay None evident

Plasterwork Very intact

Joinery Very intact



NO. 17 DENNY STREET

INFORMATION

RPS/ NIAH 130/2100731

General Description End-of-terrace five bay three storey over basement former house, built c. 1826, with two single storeys over basement bay window projections to south side wall and three storeys over basement extension to rear c. 1955. Now as hostel and restaurant.

Roof Pitted and hipped double-span artificial slate roof

Parapet none

Chimneys Rendered chimney stack

Rainwater Goods Galvanised and cast-iron rainwater goods and decorative polygonal clayware pots.

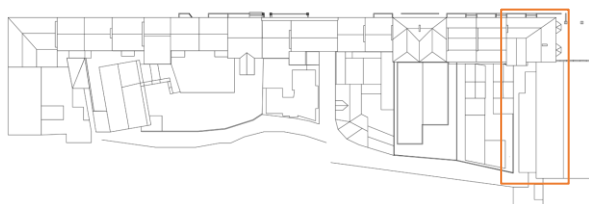
Ironwork Decorative wrought iron railings on rendered retaining wall with stone capping

External Plasterwork/Brick/Stucco Lined-and-ruled nap rendered walls over rubble stone masonry

Windows Timber sliding sash windows with limestone sills. Timber sliding sash tripartite windows to side elevation.

Front Door Timber panelled door with carved lintel and engaged ionic columns, surrounding decorative metal radial fanlight with moulded ashlar archivolt above.

Steps Stone steps up to entrance level. Stone flagged steps to basement area.



NO. 18 DENNY STREET

INFORMATION

RPS/ NIAH 159/ 21007028

General Description Corner-sited end of-terrace five- bay three storeys over basement former house, built c. 1820's, with three-storey mock-Georgian extension to rear. Recently in use as offices, but now vacant.

Roof Pitched and hipped natural slate roof

Parapet None

Chimneys Rendered chimneystack having polygonal clayware pots.

Rainwater Goods Cast-iron

Ironwork Wrought-iron railings on rendered plinth.

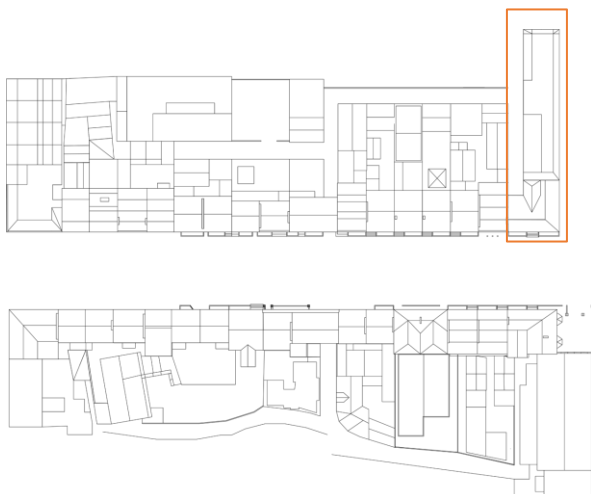
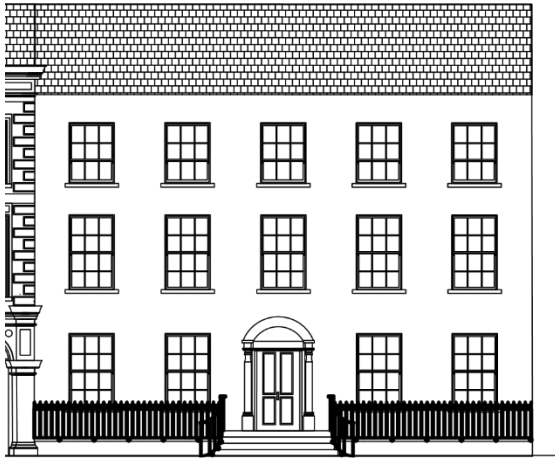
External Plasterwork/Brick/Stucco Painted lined-and-ruled nap rendered walls.

Windows Timber sliding sash windows to top floors. Timber top hung outward opening mid-section windows to ground floor. Timber fixed windows to basement. Limestone sills.

Front Door Timber panelled door flanked by engaged ionic columns with carved lintel and radial fanlight above surrounded by moulded archivolt.

Steps Slate flag steps to basement. Slate flag steps to basement.

Ironmongery Modern iron handles



NO. 19 DENNY STREET

INFORMATION

RPS/ NIAH 158/21007027

General Description Terraced, three-bay, three-storey over basement former house, built c. 1820's. Formerly used as a bank and now vacant. Three-storey rear extension and internal rearrangement undertaken in 1866.

Roof Pitched, double-span natural slate roof.

Parapet Rendered & painted parapet with projecting moulded cornice

Chimneys Rendered chimneystack with projecting cornice and four octagonal clayware chimneypots.

Rainwater Goods concealed parapet gutter

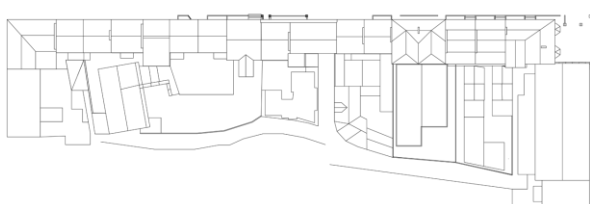
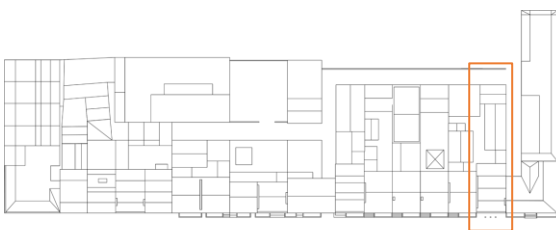
Ironwork Cast iron railings on limestone plinth. Recessed to former entrance to left hand side.

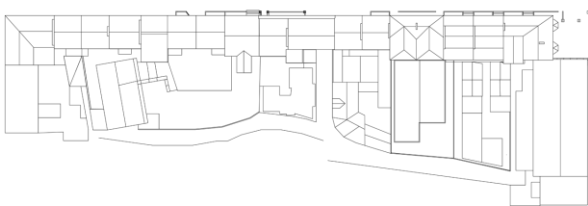
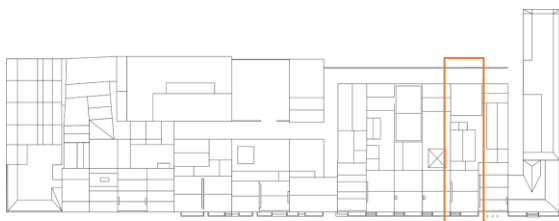
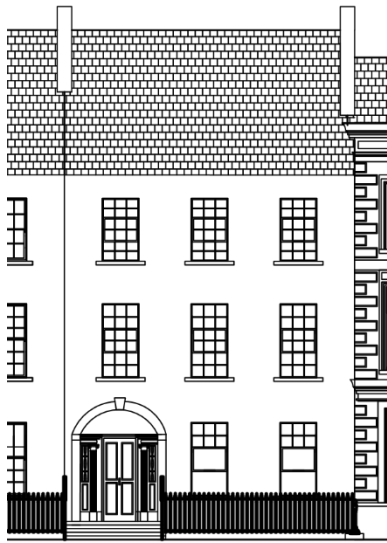
External Plasterwork/Brick/Stucco Painted smooth rendered walls with projecting painted stucco quoins, moulded stringcourse below roof cornice, raised stringcourse above first floor windows, projecting stringcourse above ground floor windows, raised cornice at sill level on ground floor and decorative stucco panels flanking front door fanlight arch.

Windows Raised String cornices above first floor windows, projecting string cornice at floor level first level. Raised cornice sill level ground floor. uPVC top hung outward opening windows.

Front Door Decorative stucco panels flanking front door fanlight arch with large keystone. Timber panelled door with fanlight above having egg and dart moulding in doorway arch with keystone.

Steps One step to front door. Limestone.





NO. 20 DENNY STREET

INFORMATION

RPS/ NIAH 157/21007026

General Description Terraced, three-bay, three-storey over basement house, built c. 1820's, with three-storey extension to rear. Formerly used as a bank, and now in office use.

Roof Pitched natural slate roof

Parapet None

Chimneys Rendered chimneystack with polygonal clayware pots

Rainwater Goods aluminium replacement rainwater goods

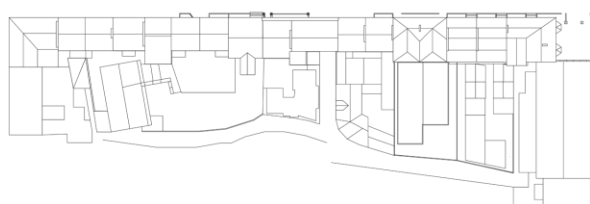
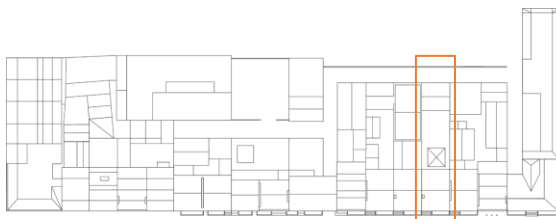
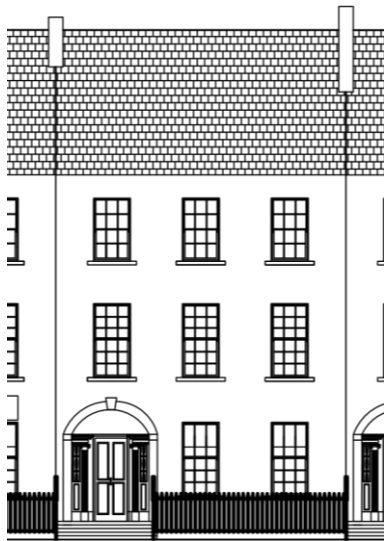
External Plasterwork/Brick/Stucco Lined-and-ruled smooth rendered walls. Ashlar quoins to rear return.

Windows uPVC top-hung casement windows with painted limestone sills

Front Door Timber panelled door with carved entablature and engaged Ionic columns flanked by margin lights with radial fanlight above surrounded by moulded archivolt. Timber panelled door to basement.

Steps Limestone steps to front door. Concrete steps to basement area

Ironmongery Cast-iron railings on limestone plinth



NO. 21 DENNY STREET

INFORMATION

RPS/ NIAH 156 /21007025

General Description Terraced, three-bay, three-storey over basement house, built c. 1820's, with two-storey extension added c. 1990 with double-height atrium, incorporating former two-storey outhouse to rear. Now in office use.

Roof Pitched natural slate roof to main building. Flat roof to extension with pyramidal rooflight with patent aluminium glazing and polycarbonate sheeting translucent panels.

Parapet None

Chimneys Rendered chimneystacks

Rainwater Goods intact

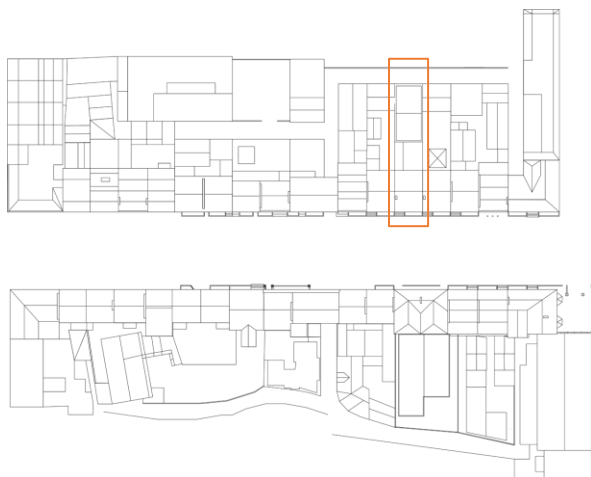
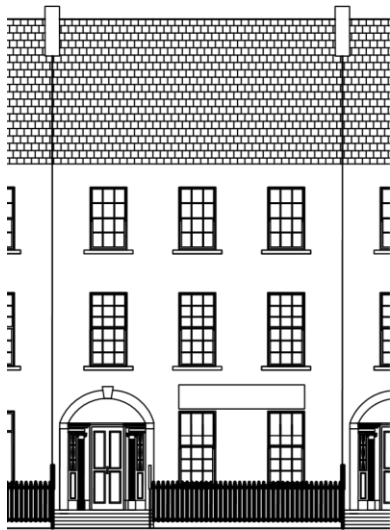
External Plasterwork/Brick/Stucco Painted lined-and-ruled smooth rendered walls

Windows Timber sliding sash windows. Limestone sills. Modern top-hung casement windows to basement.

Front Door Timber panelled door with carved Ionic engaged columns flanked by margin lights with radial fanlight above, surrounded by moulded archivolt. Glazed timber door to basement.

Steps Limestone steps up to front door. Slate flag steps to basement area.

Ironmongery Cast-iron railings on limestone plinth



NO. 22 DENNY STREET

INFORMATION

RPS/ NIAH 155 /21007024

General Description Terraced, three-bay, three-storey over basement house, built c. 1820's, with two-storey extension to rear. Now in office use.

Roof Pitched roof with natural slate covering

Parapet None

Chimneys smooth rendered chimneystack

Rainwater Goods intact

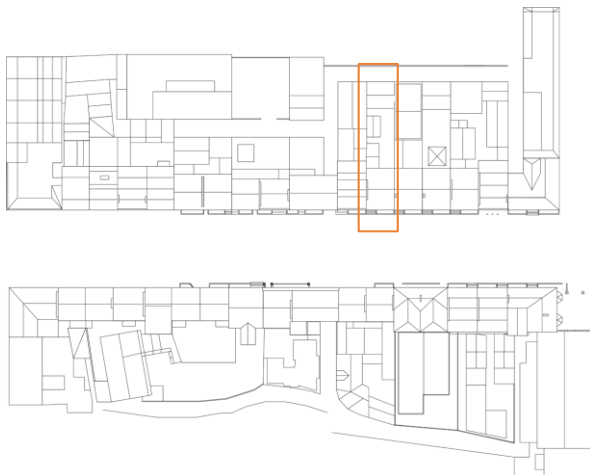
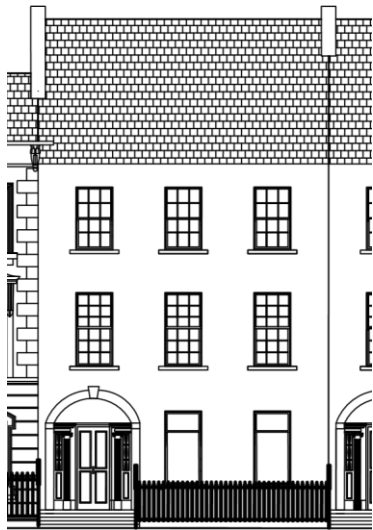
External Plasterwork/Brick/Stucco Painted lined-and-ruled smooth rendered walls

Windows Timber sliding sash windows with painted limestone sills. uPVC windows to basement.

Front Door Timber panelled door with carved entablature and engaged Ionic columns flanked by margin lights with radial fanlight above surrounded by moulded archivolt. Timber panelled door to basement

Steps Limestone steps to front door. Slate flag steps to basement area

Ironmongery Cast-iron railings with limestone plinth



NO. 23 DENNY STREET

INFORMATION

RPS/ NIAH 154/21007023

General Description Terraced, three-bay three-storey over basement house, built c. 1820's, with two-storey extension to rear built 1998. Now in use as offices.

Roof Pitched roof with natural slate covering

Parapet

Chimneys Rendered chimney stack with stucco moulding.

Rainwater Goods uPVC rainwater goods with some remnants of cast-iron

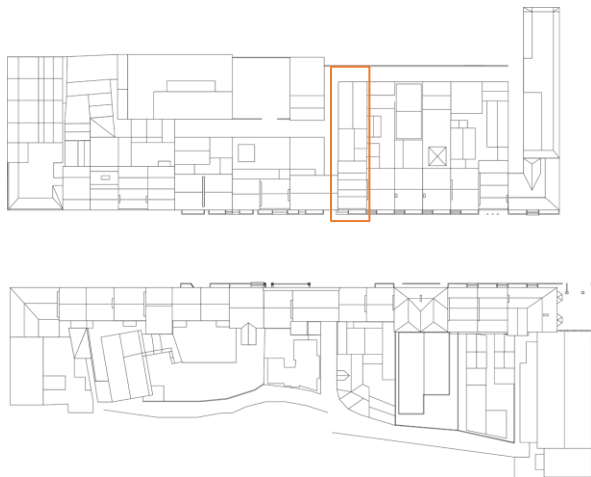
External Plasterwork/Brick/Stucco Lined-and-ruled nap-rendered walls. Projecting metal bracket affixed to wall, with timber painted sign.

Windows uPVC casement windows with limestone sills to upper floors.

Front Door Timber panelled door with carved lintel flanked by engaged Ionic columns and margin lights, radial fanlight above with limestone archivolt

Steps Limestone steps to front door. Concrete steps to basement

Ironmongery Wrought/cast-iron railings substantially intact with moulded limestone plinth.



NO. 24 DENNY STREET

INFORMATION

RPS/ NIAH 153/21007022

General Description Terraced three-bay, three-storey over basement building, with three-storey return and later extension to rear, built as County of Kerry Club, and now in office use.

Roof Pitched roofs with fibre-cement tile covering.

Parapet Projecting cornice with moulded stucco brackets.

Chimneys Rendered chimneystack with polygonal clayware pots and limestone cornice.

Rainwater Goods Cast-iron supported on eaves brackets

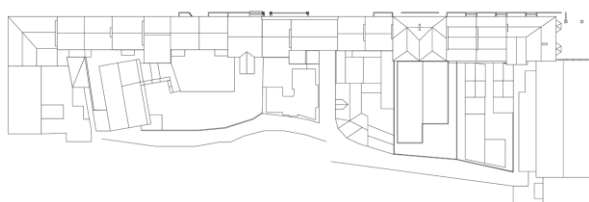
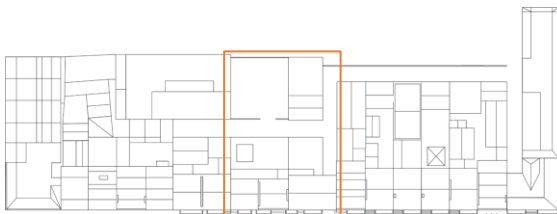
Ironwork Modern replacement metal railings on limestone plinth.

External Plasterwork/Brick/Stucco Painted nap rendered walls with moulded quoins to upper floors. Channelled rendered walls to ground floor with limestone stringcourse to sill level at first floor and raised stringcourse below roof cornice.

Windows UPVC casement windows to first and second floors with stucco surrounds having projecting entablature supported by scrolls. Moulded render surrounds with limestone sills to ground floor single pane timber sash segmental-arched windows with render moulded surrounds with keystone details.

Front Door Timber panelled door with carved limestone lintel flanked by engaged Ionic columns with radial fanlight and moulded archivolt above.

Steps Limestone steps to front door



NO. 25 of 25-27, DENNY STREET

INFORMATION

RPS/ NIAH 152 /21007021

General Description Terraced five-bay, three-storey former house with integral carriage arch, built c. 1830's, now in use as a hotel, along with two neighbouring buildings.

Roof Pitched, natural slate roof. Roof condition generally good

Parapet None

Chimneys Cement rendered chimneystack shared with no.26, with polygonal clayware chimney pots.

Rainwater Goods Cast-iron rainwater goods

Ironwork replacement railings extant

External Plasterwork/Brick/Stucco Lined-and ruled painted nap-rendered walls with moulded render quoins to one side only. Moulded render surround to elliptical carriageway. Fair condition.

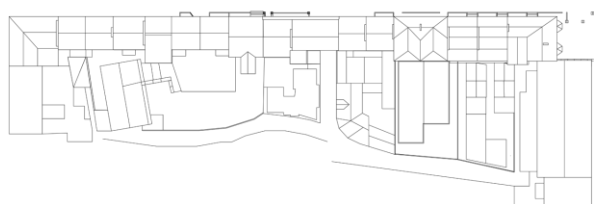
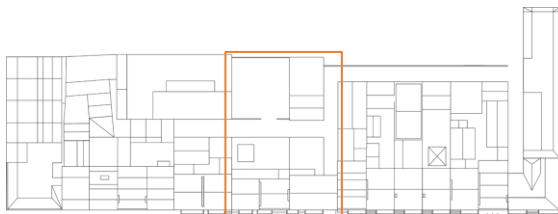
Windows Modern timber sliding sash windows with painted limestone sills and moulded render surrounds.

Front Door replacement front door not in use

Steps Limestone

Ironmongery Modern iron railings on stone plinth

Joinery Original staircase lost. Modern timber shutters internally.



NO. 26 of 25-27, DENNY STREET

INFORMATION

RPS/ NIAH 151/21007020

General Description Terraced three-bay, three-storey former house, built c. 1830, now in use as a hotel, along with two neighbouring buildings.

Roof Pitched, natural slate roof. Roof condition generally good

Parapet Decorative parapet with corbels.

Chimneys Cement rendered chimneystack with polygonal clayware chimney pots.

Rainwater Goods Cast-iron rainwater goods

Ironwork concealed parapet gutter

External Plasterwork/Brick/Stucco Lined-and ruled painted nap-rendered walls. Fair condition.

Windows Modern timber sliding sash windows with painted limestone sills and moulded render surrounds.

Front Door Timber panelled double-leaf doors flanked by fixed glazing. Modern limestone doorcase, projecting portico and steps

Steps Modern limestone steps to front door

Ironmongery Modern iron railings on stone plinth

Joinery Original staircase lost, apart from a small surviving section between first and second floors. Modern timber shutters internally.

NO. 27 of 25-27, DENNY STREET

INFORMATION

RPS/ NIAH 151/21007019

General Description Terraced three-bay, three-storey former house, built c. 1830's, now in use as a hotel, along with two neighbouring buildings.

Roof Pitched, natural slate roof. One slipped slate identifiable from street, but condition generally good

Parapet None

Chimneys Cement rendered chimneystacks

Rainwater Goods Cast-iron rainwater goods

Ironwork Modern replacement railings on limestone plints

External Plasterwork/Brick/Stucco Lined-and ruled painted nap-rendered walls. Fair condition

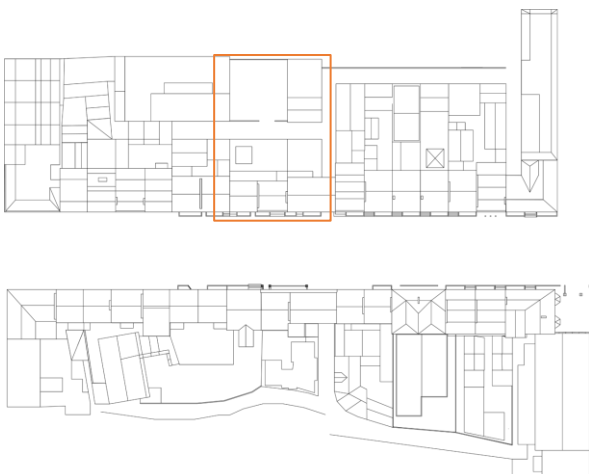
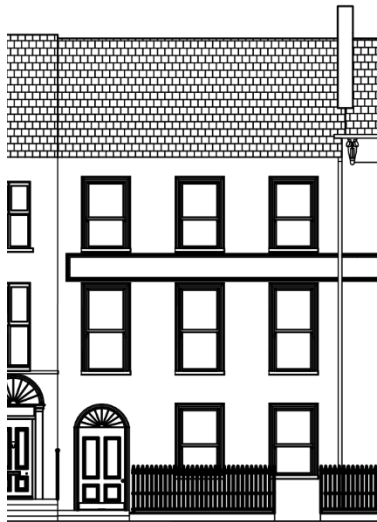
Windows Modern timber sliding sash windows with painted limestone sills and moulded render surrounds.

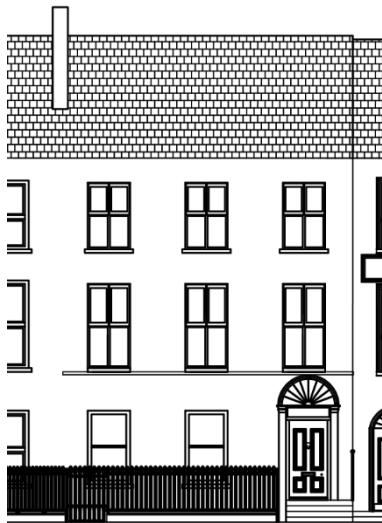
Front Door Timber panelled double-leaf doors with top light, having timber pilaster and entablature surround

Steps Limestone steps to front door

Ironmongery Modern iron railings on stone plinth

Joinery Original staircase lost, apart from a small section at first floor level. Modern timber shutters internally.





NO. 28, DENNY STREET

INFORMATION

RPS/ NIAH 150/21007018

General Description Terraced three-bay three-storey over basement former house, built c. 1820's, now in use as offices

Roof Pitched, artificial slate roof

Parapet

Chimneys Cement rendered chimneystack with polygonal clayware pots, shared with no. 29

Rainwater Goods uPVC rainwater goods

Ironwork Cast- Iron railing on limestone plinth.

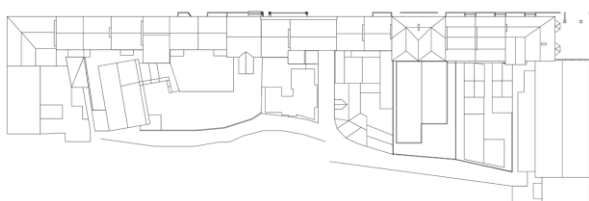
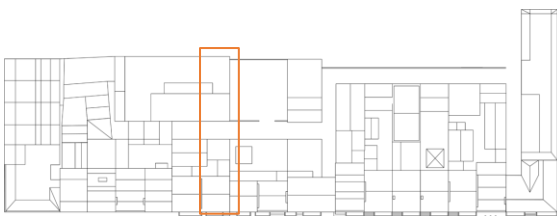
External Plasterwork/Brick/Stucco Painted nap-rendered walls with projecting stringcourse at sill level to first floor.

Windows Modern four pane uPVC windows with two top openings replaced single pane timber sliding sash windows with limestone sills, apart from modern uPVC casement to central window at first floor level. Louvred openings at basement level. Multi-pane timber sliding sash window to stairs to rear.

Front Door Timber panelled door with top light surrounded by moulded render pilasters and radial stucco decoration.

Steps Limestone steps to front door

Ironmongery Cast-iron railings on limestone plinth



NO. 29, DENNY STREET

INFORMATION

RPS/ NIAH 149/21007017

General Description Terraced, three-bay, three-storey over basement house, built c. 1820's, with three-storey return. Residential use to ground floor. Two-storey outbuilding to rear

Roof Pitched roof with natural slate covering.

Parapet None

Chimneys Cement rendered chimneystack shared with no. 34

Rainwater Goods Cast-iron, including hopper.

Ironwork Wrought Iron railings on limestone plinth.

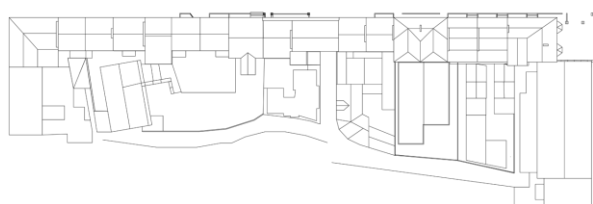
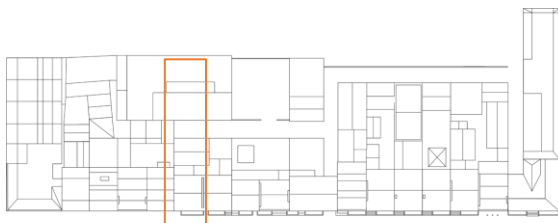
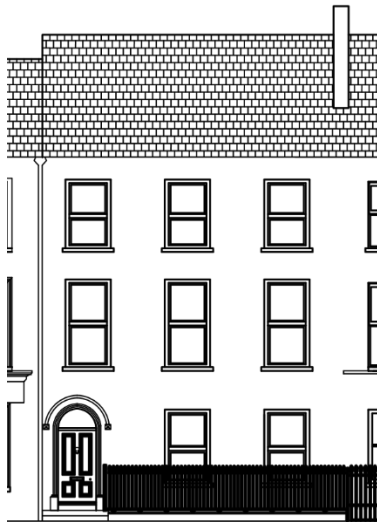
External Plasterwork/Brick/Stucco Unpainted nap rendered walls

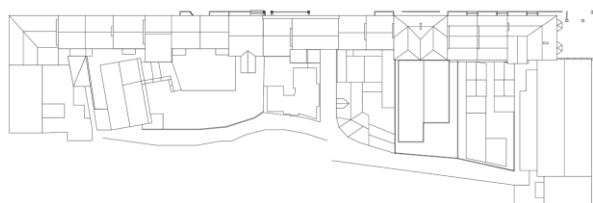
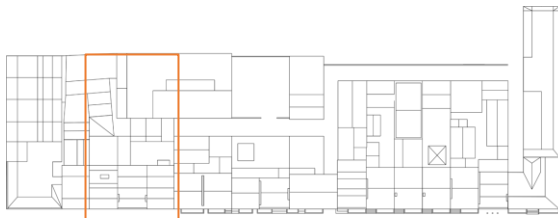
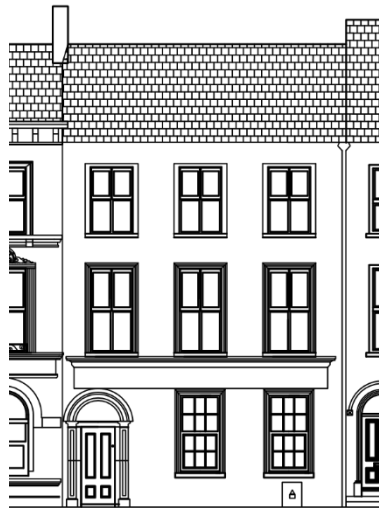
Windows uPVC top-hung casement windows with limestone sills

Front Door Timber panelled door with fanlight and moulded archivolt, limestone doorsteps

Steps Limestone doorsteps

Ironmongery wrought-iron railings on limestone plinth





NO. 30 of 30-32, DENNY STREET

INFORMATION

RPS/ NIAH 148/21007016

General Description Terraced, three-bay, three-storey former house, built c. 1820's, in use since the early 20th century as a hotel.

Roof Pitched roofs with natural slate covering

Parapet None

Chimneys Cement rendered chimneystack

Rainwater Goods cast-iron rainwater goods

Ironwork

External Plasterwork/Brick/Stucco Lined-and-ruled painted nap-rendered walls with modern timber name board to ground floor.

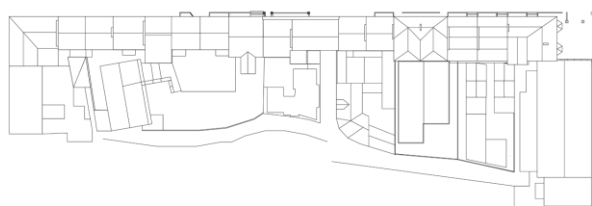
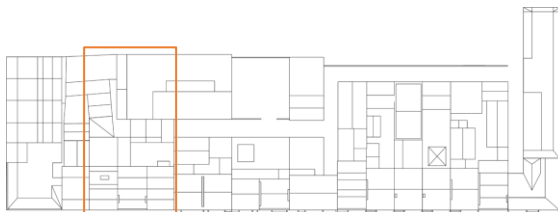
Windows Aluminium top-hung casement windows with limestone sills and moulded stucco surrounds to first and second floors. uPVC casement windows to ground floor with moulded stucco archivolt surrounds.

Front Door Glazed timber panelled front door with fanlight above, surrounded by limestone pilasters and lintel with carved archivolt over fanlight.

Steps Limestone doorstep

Plasterwork Bar and Left-hand side retains plasterwork- Partitions/Chimney piece original to hotel.

Joinery Internal partitions removed at ground floor level 1990 to create open-plan dining room for hotel. Original staircase removed



NO. 31 of 30-32, DENNY STREET

INFORMATION

RPS/ NIAH 148/ 21007015

General Description Terraced, three-bay, three-storey former house, built c. 1820's. Later used as a post office between 1887-1910, and since the early 20th century has been a hotel.

Roof Pitched roofs with natural slate covering

Parapet Projecting parapet cornice with decorative stucco brackets

Chimneys Cement rendered chimneystack

Rainwater Goods concealed parapet

Ironwork none

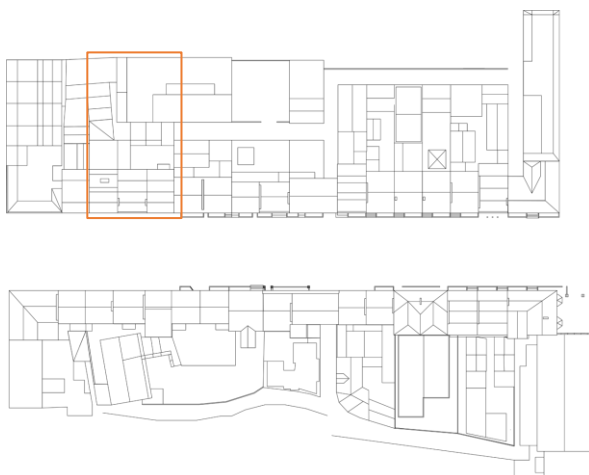
External Plasterwork/Brick/Stucco Painted nap-rendered walls to upper floors, projecting string cornice at sill level on third floor. Lined out rendered walls with moulded stringcourse at sill and arch spring level with limestone entablature at ground floor level.

Windows Aluminium top-hung casement windows with moulded stucco surrounds to first and second floors. Decorative stucco pediments to first floor windows. uPVC bottom hung casement windows in arched openings to ground floor with moulded stucco archivolt surrounds.

Front Door Centrally placed timber panelled double leaf front door with fanlight above and projecting metal arched canopy

Steps Limestone doorstep

Ironmongery Early cast-iron 'Grand Hotel' lettering above central door opening.



NO. 32 of 30-32, DENNY STREET

INFORMATION

RPS/ NIAH 147/21007014

General Description Terraced, three-bay, three-storey former house, built c. 1820's, with limestone façade to ground floor. Now in use as public house to ground floor and hotel to upper floors, having been connected internally to Grand Hotel to south c. 1965.

Roof Pitched roofs with cement tile covering.

Parapet None

Chimneys Cement rendered chimneystack

Rainwater Goods Cast-iron

Ironwork None

External Plasterwork/Brick/Stucco Ashlar limestone shopfront to ground floor with channelled block detail to side pilasters and Ionic columns on either side of bow window, supporting plain stone cornice. Painted nap rendered walls to first and second floors. Painted stucco surrounds to windows at first and second floors.

Windows Bow-fronted fixed modern uPVC multi-paned window to ground floor, with opening upper lights. Aluminium top-hung casement windows with stone sills to first and second floors.

Front Door Modern timber panelled doors

Steps Limestone doorstep

Plasterwork Some decorative plasterwork retained to ground floor, indicating earlier arrangement of separate entrance to upper floors, with original hallway cornices in place to north. Timber chimneypiece to front bar at ground floor installed when hotel opened.



NO.33, DENNY STREET

INFORMATION

RPS/ NIAH 146/21007013

General Description Terraced three-bay, three-storey former house, built c. 1820's, with converted attic and two-storey return to rear. Currently in use as offices.

Roof Pitched roof with cement tiled covering. Modern rooflights.

Parapet None

Chimneys Cement Rendered chimney stack

Rainwater Goods Cast Iron rainwater goods

Ironwork none

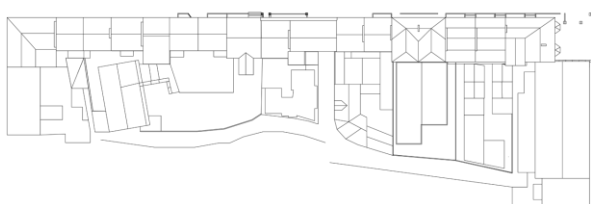
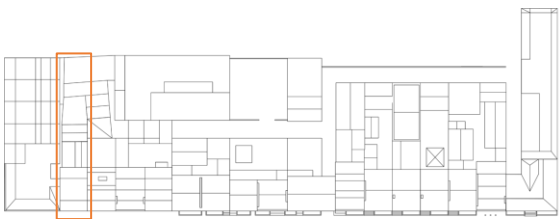
External Plasterwork/Brick/Stucco Painted nap rendered walls with stucco quoins to sides of first and second floors. Raised moulded stucco surrounds to windows.

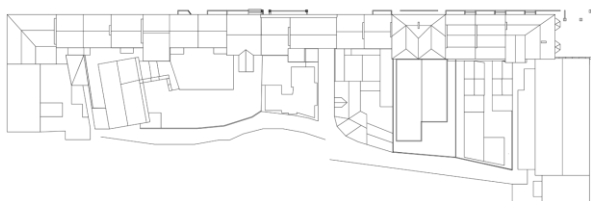
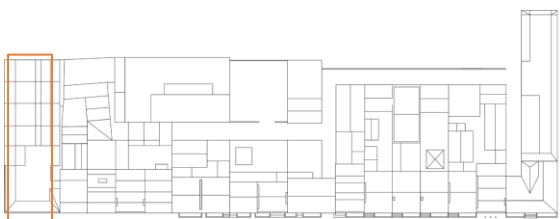
Modern painted timber shopfront and entrance door to ground floor

Windows Stone sills. uPVC top-hung casement windows.

Front Door Modern timber entrance door forms part of shopfront

Steps Limestone doorstep





KDYS, DENNY STREET

INFORMATION

RPS/ NIAH not included

General Description Semi-detached, three-bay, two-storey building, built c. 1940's, with a concrete projecting canopy to ground floor entrance doors, and single storey extensions to rear. In use by KYDS as a diocesan youth facility.

Roof not inspected

Parapet none

Chimneys none

Rainwater Goods uPVC rainwater goods

Ironwork none

External Plasterwork/Brick/Stucco painted cementitious render, with raised banded surrounds to first floor windows

Windows uPVC casement windows and fixed lights

Front Door uPVC glazed doors

Steps none